

Instructions for Computer Science Linux/Unix based machines.

There are two Linux machines available for student use. These are:

login.cs.ecu.edu
xlogin.cs.ecu.edu

These machines support SSH and NX (GUI) logins. SSH is installed by default on nearly all modern Linux/Unix machines. For Windows, Putty is the most popular SSH client. You can download Putty by visiting:

<http://www.chiark.greenend.org.uk/~sgtatham/putty/>

Or simply use a search engine for “putty” or “windows ssh client”.

Installation instructions for the NXCLIENT software which enables graphical login to the Linux machines for Computer Science:

This guide has borrowed heavily from: <http://www.nomachine.com/documents/client/install.pdf>

To obtain a Windows copy of nxclient, please visit:

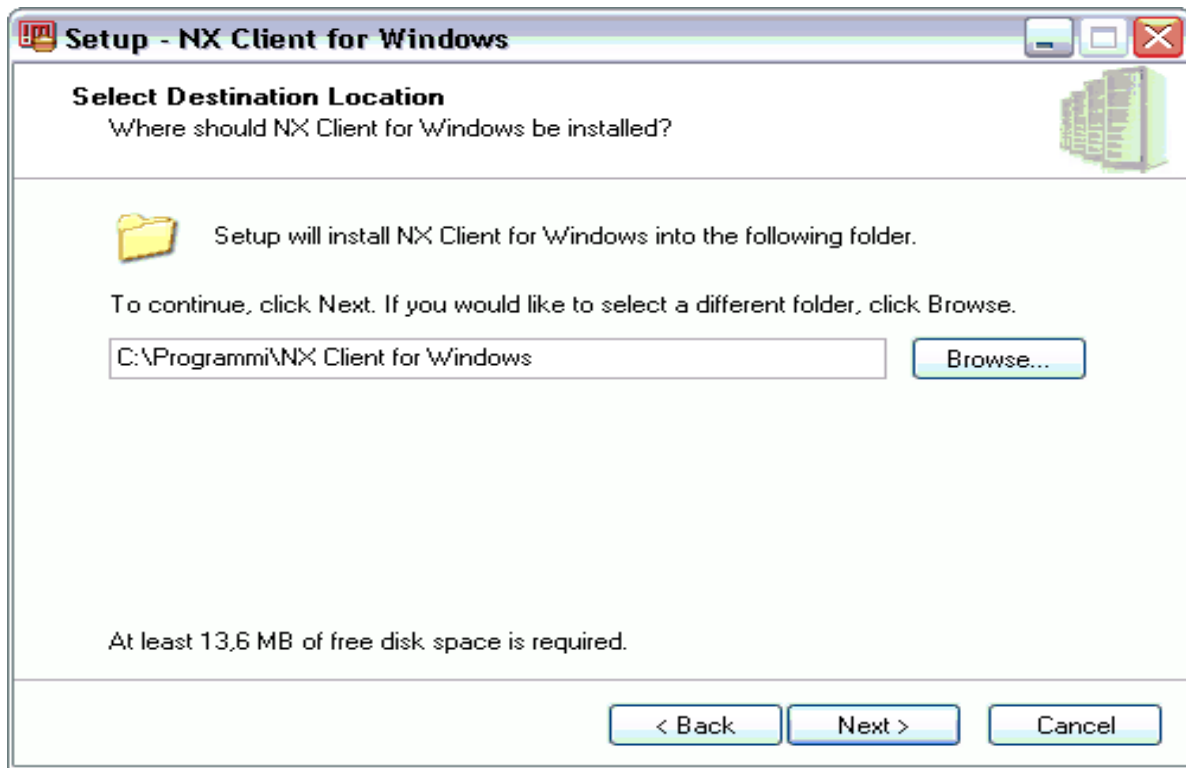
<http://www.nomachine.com/download-client-windows.php>

NX Client Installation Instructions for Windows Platforms:

Write access is necessary to be able to continue with the installation, update or removal of the client software.

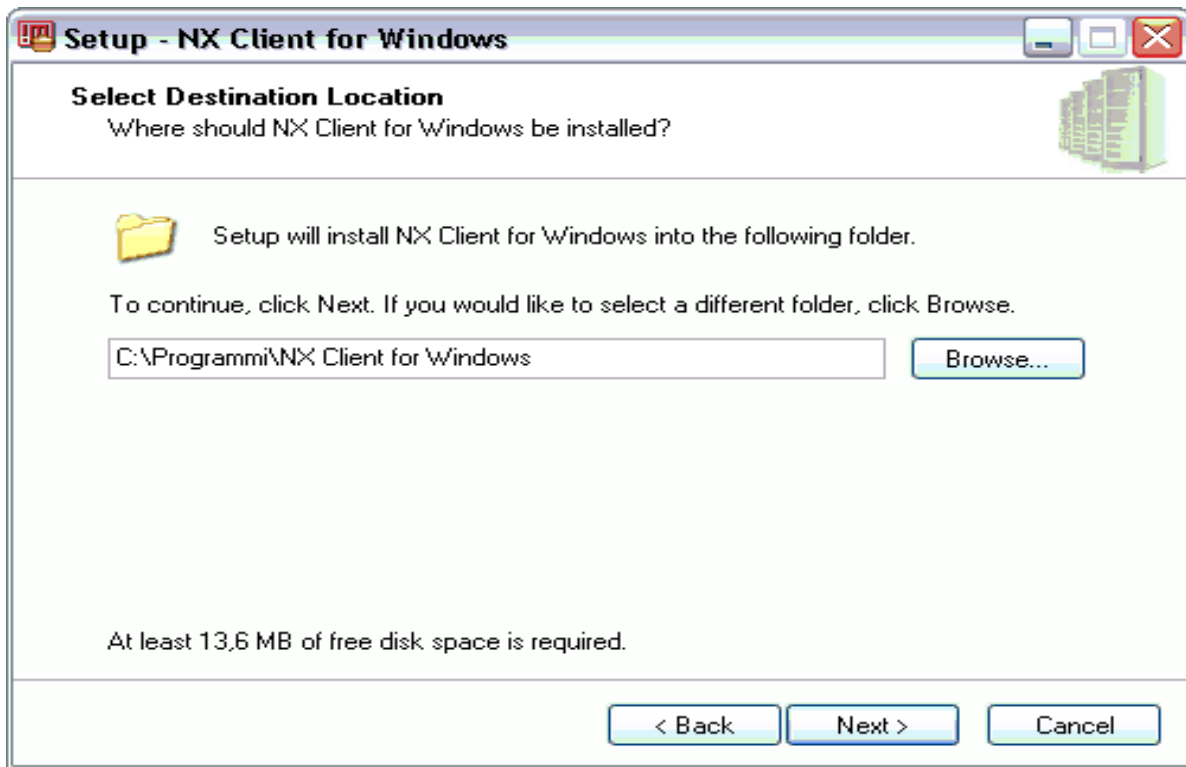
Installing NX Client

Double-click on the icon of the NX Client executable file you have downloaded from the NoMachine Web site: the NX Setup Wizard will take you through the installation.



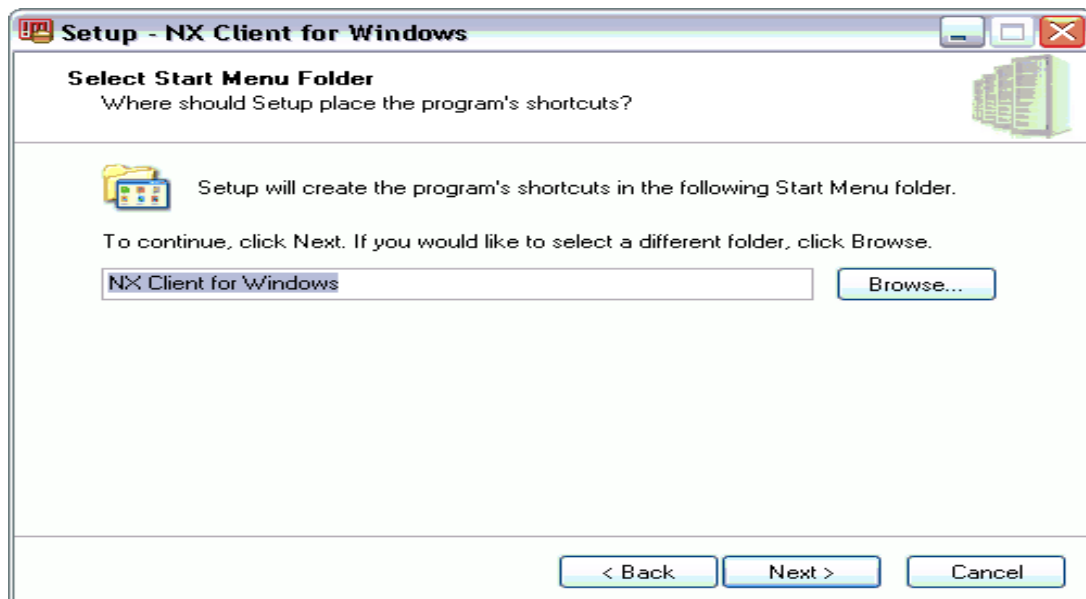
Select where to install NX Client and confirm by clicking on the Next button.

The Setup Wizard will allow you to create the program shortcut in the Start Menu by default or in any folder of your choice.



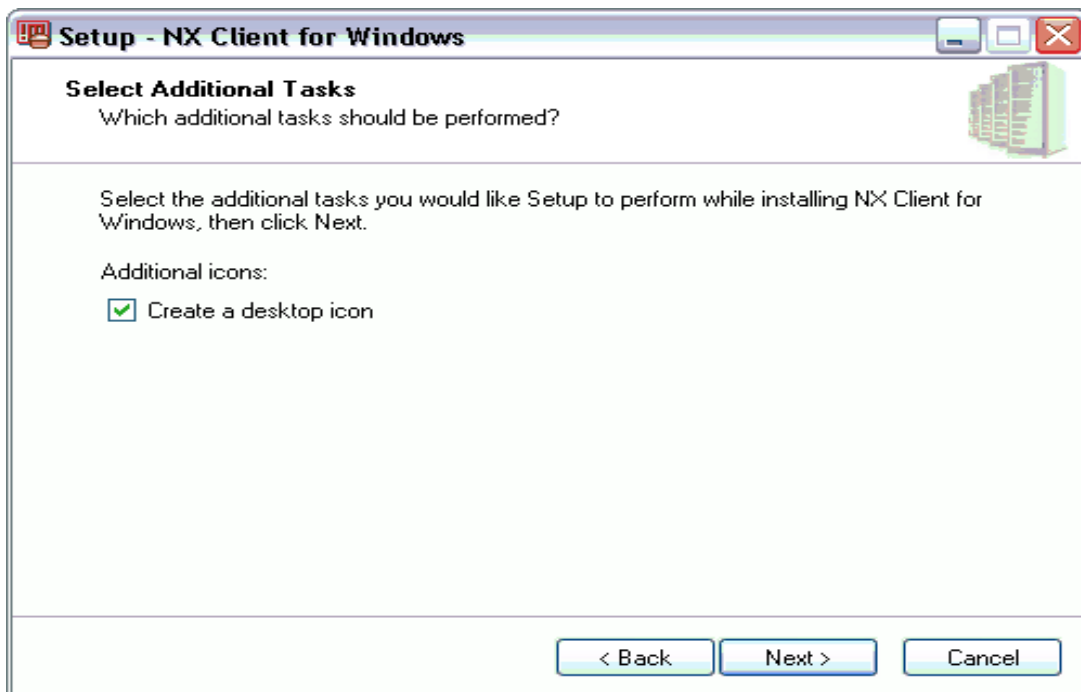
To proceed, click on the Next button.

A further dialog will enable you to create an additional shortcut to the application on your desktop.



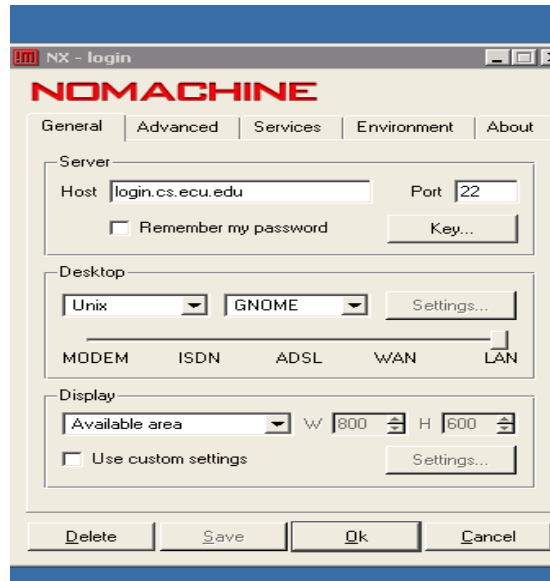
Confirm according to your personal preference.

The final dialog will ask you to confirm the installation of NX Client on your machine.



After the initial install, launch the nxclient. If you selected “Create a desktop icon” during install (default), then you should have a new icon on your desktop to launch NX.

Once you start NX and select “configure”, you should see the following screen:



Please make sure you select “Gnome” in the Desktop drop down box or the connection will not work.

After adjusting your settings, click Save followed by OK.

You should now be able to connect. You will also have a new icon on your desktop to connect with one click.